

Speech Pathology

What is Speech Pathology?

Speech Pathology involves the **assessment**, **diagnosis** and **treatment** of communication difficulties. At Chat Well Allied Health, we provide speech pathology services for:

- **Early Intervention**
- **Understanding and Use of Language**
- **Speech Clarity**
- **Fluency (stuttering)**
- **Literacy**
- **Social Communication**
- **AAC (Alternative and Augmentative Communication)**
- **Deaf and HoH Support**

Our speech pathologists support children with a range of diagnoses, including Autism, Intellectual Disability, Developmental Delay and much more. Chat Well embodies a neurodiversity-affirming approach within our practice to ensure all individuals feel supported and empowered.

What does Speech Pathology involve?



Initial Consultation and Assessment

The first step to understanding your child's current speech, language, and communication skills.



Speech Therapy

A personalised therapy program tailored for your child, delivered by your Speech Pathologist.



Appointment Length and Frequency

Therapy can be from 45-60 minutes on a weekly or fortnightly basis.



Therapy Assistance

A therapy program delivered by a Speech Pathology student/Therapy Assistant and overseen by your Speech Pathologist.



Interprofessional Collaboration

Empowering education staff and other professionals to deliver support to your child in between appointments.

Where can I access Speech Pathology services?



In-Clinic

- Greenacres
- Mawson Lakes
- Stirling



School, Home or Childcare



Telehealth

- Phone
- Video Call



chat well

ALLIED HEALTH



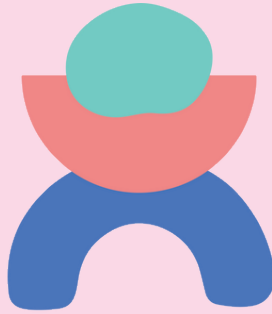
(08) 8102 0118



hello@chatwell.com.au



Register your interest now at
www.chatwell.com.au/referrals



chat well

ALLIED HEALTH



[/chatwellalliedhealth](https://www.facebook.com/chatwellalliedhealth)



[@chatwellalliedhealth](https://www.instagram.com/chatwellalliedhealth)

For more information about Speech Pathology, scan the QR code below.

